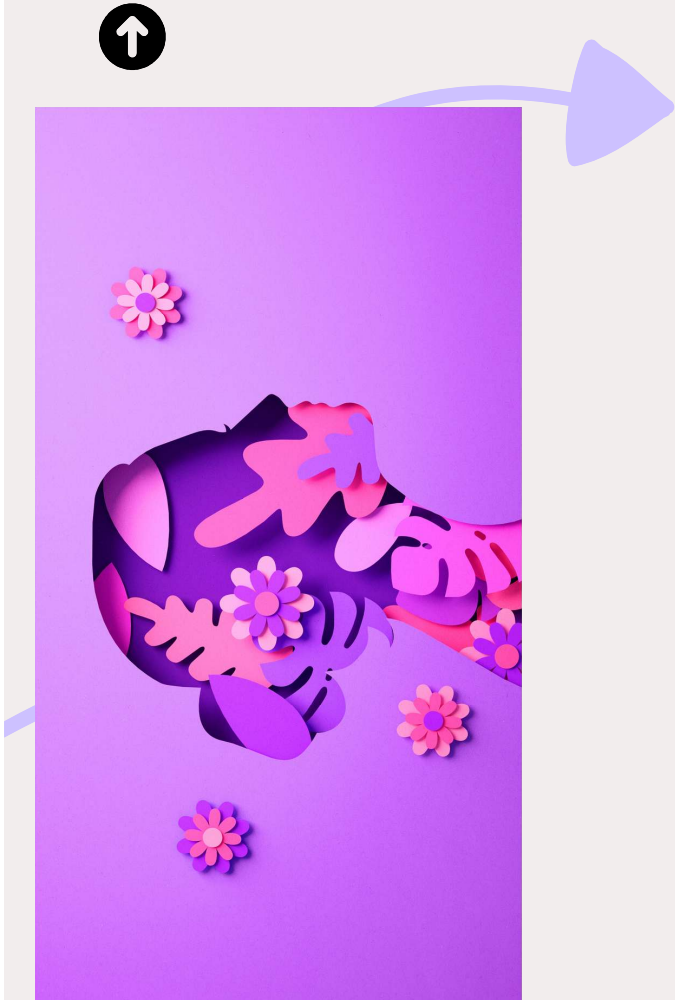




2024/25



Annual Report

1 April 2024 - 31 March 2025

Highlights of the Year



Developed our community delivery service, increasing our presence across Warrington and addressing a more diverse clientele.



Delivered 8 Responding to Domestic Abuse Training sessions to partners

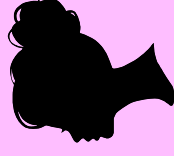


275

Supported a Mum and daughter asylum seeker flee an abusive situation, providing safe accommodation for almost 2 years.



Women we supported
Provided Direct and indirect support - impacting



363

OUR MISSION STATEMENT:
REDUCE INCIDENCE AND IMPACT BY SUPPORTING,
EMPOWERING AND EDUCATING SURVIVORS OF
DOMESTIC ABUSE AND THEIR CHILDREN, IN A SAFE
AND NON-JUDGMENTAL ENVIRONMENT TO MOVE
FORWARD POSITIVELY AND WITH DIGNITY.

Our Values

Our core values run through all
the work we do

We are inclusive,
passionate and
non-judgemental.

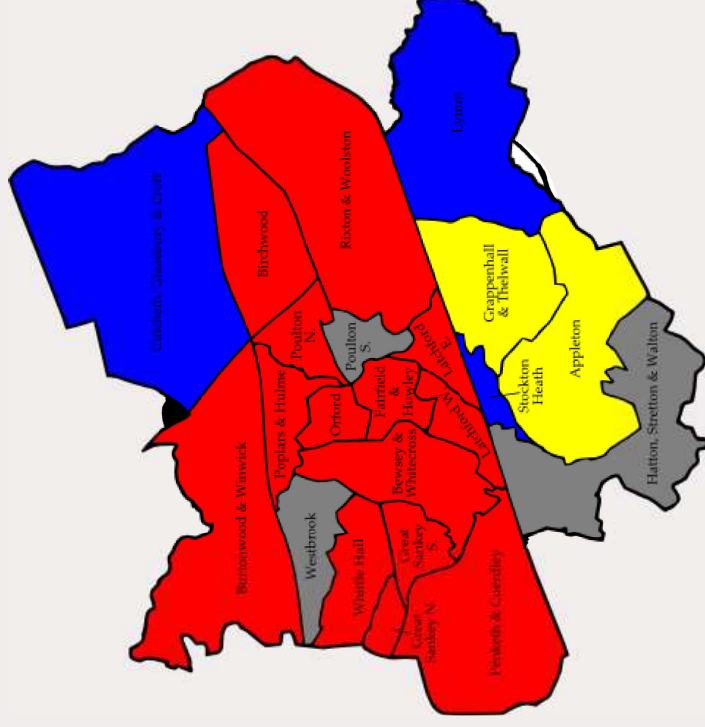
We respect a
person's right to
make their own
decisions.

We are accountable
for our actions and we
will involve the people
we support in our
decision making.

We empower those we
support, via a well
trained staff and
volunteer network.



Who We Are



✘ Established
1978

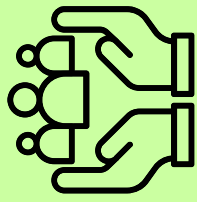
✘ The women we support
360+
average/yr

✘ **Mission**
 Providing safe, temporary accommodation for women and children affected by domestic abuse.

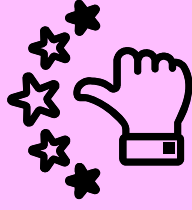
✘ Operating in
Warrington

We are the only provider of refuge accommodation in the Warrington area, supporting up to 13 women and 18 children in temporary accommodation.

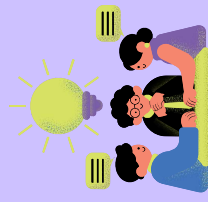
Team Highlights



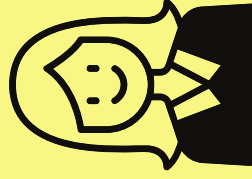
Team
9 Staff



Customer Service
91% Satisfaction Rate



Board
7 Trustees



Service
1 Staff = 11 yrs

What We Delivered



01.



Responding to Domestic Abuse

8 Training sessions delivered to 200 partners across Warrington.

02.



Equality & Diversity

Developed key partnerships with our disability, LGBTQ+ partners and supported male survivors.

03.



Counselling

Provided over **400** free counselling sessions to **75** women.

Annual Financials



+ Total Revenue
£352,158

+ Total Expenditure
£366,298

+ Free Reserves
£167,901



Our Vision for 2025-2026



Extend our property

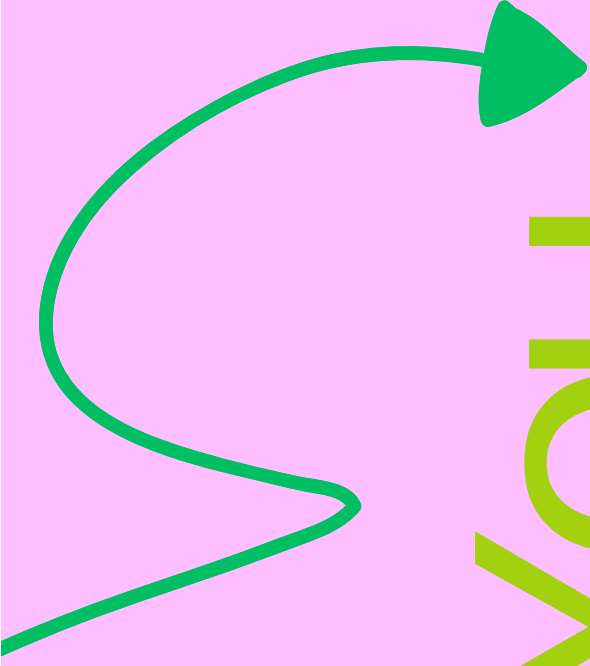
We need to provide more disability friendly spaces and rooms for the women and create more office space for the staff.

Raise more awareness

WWA has become Warrington's best kept secret; this is going to change with plans for more events, engagements and partnerships to support our work.

Become more financially sustainable

We will seek more diverse funding streams to support both core and project costs, reducing our reliance on commissioned contracts.



Thank You

Thank you for reviewing our 2024-25 journey.



CONTACT US



office@warringtonwomensaid.org.uk



www.warringtonwomensaid.org.uk